

# BAS716

## SWITCHING DIODE

<b>VOLTAGE</b>	<b>100 Volt</b>	<b>POWER</b>	<b>225 mW</b>
----------------	-----------------	--------------	---------------

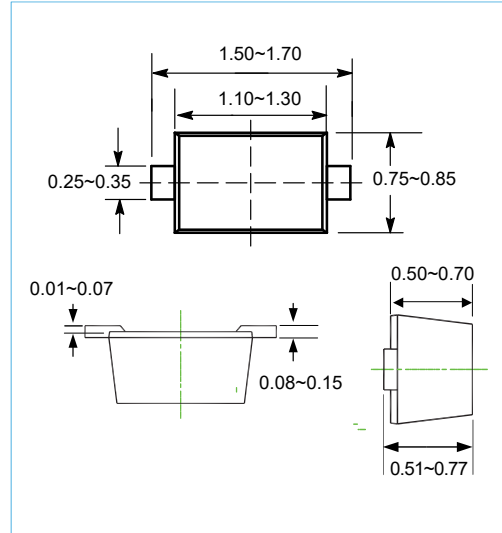
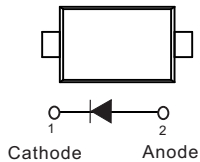
**SOD-523** Unit:mm

### FEATURES

- Fast Switching Speed
- For General Purpose Switching Applications
- Lead free in compliance with EU RoHS
- Marking code: S1

### MECHANICAL DATA

- Case Material: Molded Plastic.
- UL Flammability Classification Rating 94V-0



### MAXIMUM RATINGS AND ELECTRICAL CHARACTERISTICS( $T_A = 25^\circ\text{C}$ unless otherwise noted)

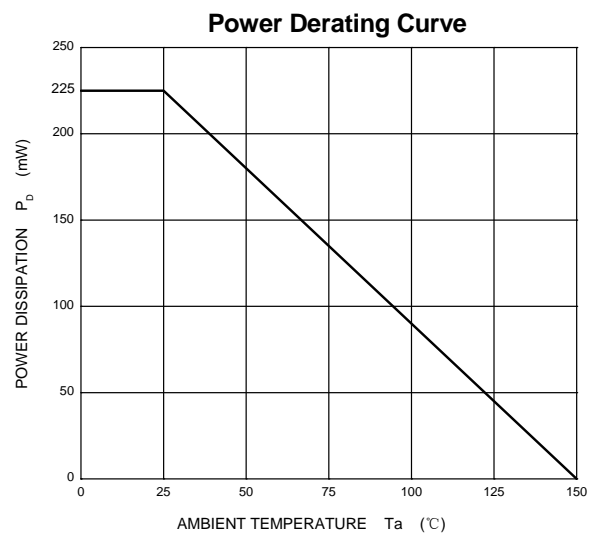
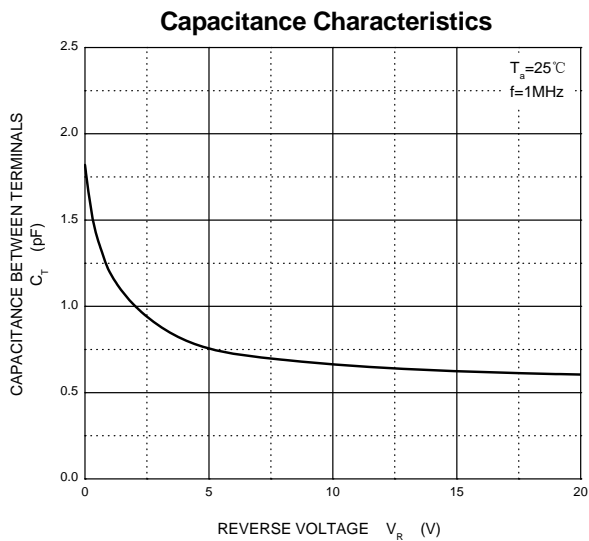
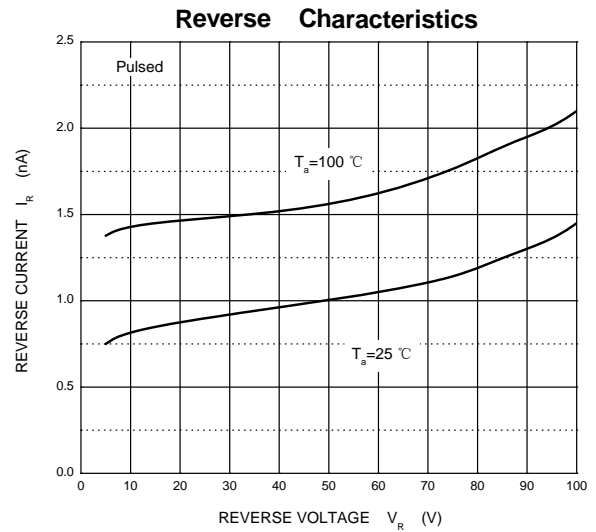
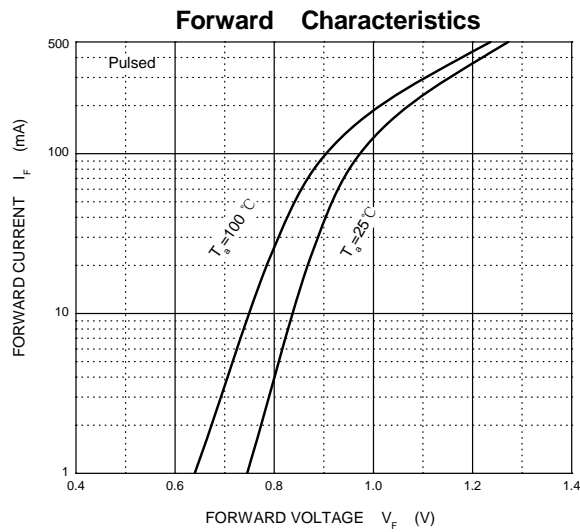
Parameter	Symbol	Limit	Unit
Non-Repetitive Peak Reverse Voltage	$V_{RM}$	100	V
Peak Repetitive Peak Reverse Voltage	$V_{RRM}$	75	V
Working Peak Reverse Voltage	$V_{RWM}$		
DC Blocking Voltage	$V_R$		
RMS Reverse Voltage	$V_{R(RMS)}$	53	V
Average Rectified Output Current	$I_O$	200	mA
Non-Repetitive Peak Forward Surge Current @ $t=8.3\text{ms}$	$I_{FSM}$	1.0	A
Power Dissipation	$P_d$	225	mW
Thermal Resistance Junction to Ambient	$R_{\theta JA}$	566	$^\circ\text{C/W}$
Junction Temperature	$T_j$	150	$^\circ\text{C}$
Storage Temperature	$T_{STG}$	-55~+150	$^\circ\text{C}$

### ELECTRICAL CHARACTERISTICS( $T_A = 25^\circ\text{C}$ unless otherwise noted)

Characteristic	Symbol	Conditions	Min	Typ	Max	Unit
Reverse voltage	$V_{(BR)}$	$(I_R = 100 \mu\text{A})$	75			V
Reverse current	$I_R$	$(V_R = 75 \text{ V})$ $(V_R = 100 \text{ V})$			5 80	nA
Forward Voltage	$V_F$	$(I_F = 1.0 \text{ mA})$ $(I_F = 10 \text{ mA})$ $(I_F = 50 \text{ mA})$ $(I_F = 150 \text{ mA})$			0.90 1.00 1.10 1.25	v
Total Capacitance	$C_T$	$(V_R = 0 \text{ V}, f = 1.0 \text{ MHz})$		2.0		pF
Reverse Recovery Time	$t_{rr}$	$I_F=10\text{mA}, I_R=10\text{mA}, I_{rr}=0.1 \times I_R, R_L=100 \Omega$			3.0	$\mu\text{s}$

# BAS716

## Typical Characteristics

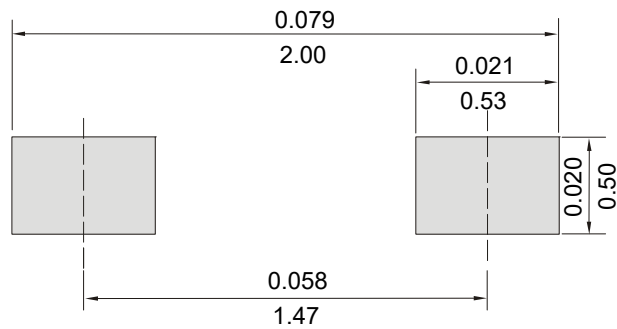


# BAS716

## MOUNTING PAD LAYOUT

### SOD-523

Unit:Inch(mm)



## ORDER INFORMATION

- Packing information

Part Number	Case	Reel Size	QUANTITY
BAS716	SOD-523	7 Inch	8000