

BAS516

SWITCHING DIODE

VOLTAGE	100 Volt	POWER	150 mW
----------------	-----------------	--------------	---------------

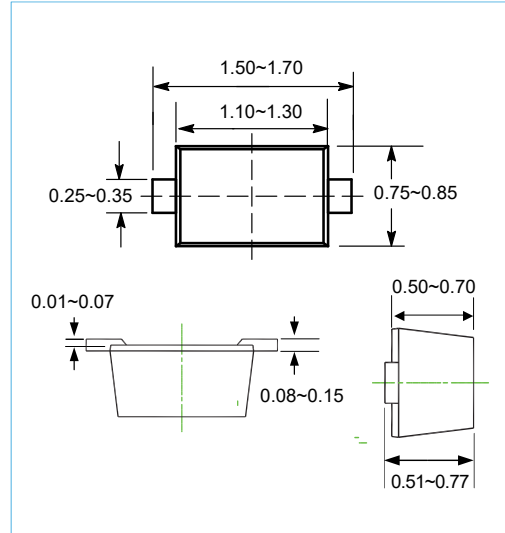
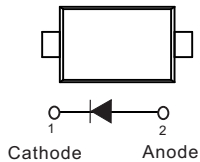
SOD-523 Unit:mm

FEATURES

- Fast Switching Speed
- For General Purpose Switching Applications
- Lead free in compliance with EU RoHS
- Marking code: 61

MECHANICAL DATA

- Case Material: Molded Plastic.
- UL Flammability Classification Rating 94V-0



MAXIMUM RATINGS AND ELECTRICAL CHARACTERISTICS($T_A = 25^\circ\text{C}$ unless otherwise noted)

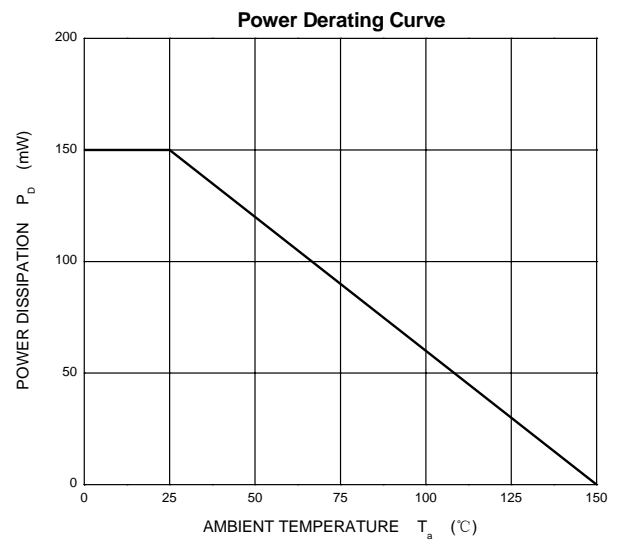
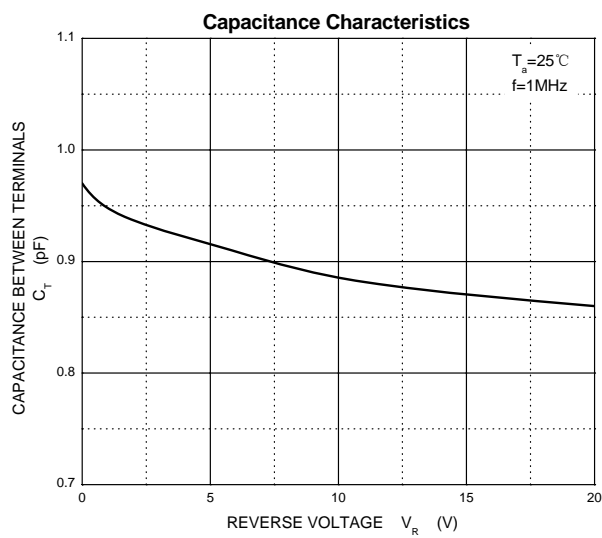
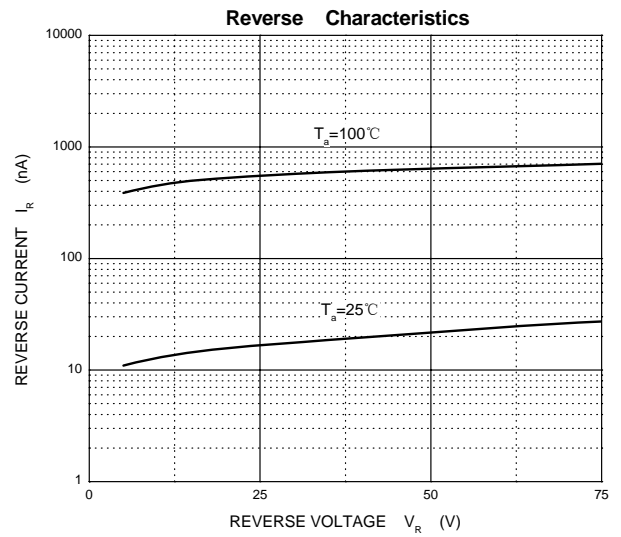
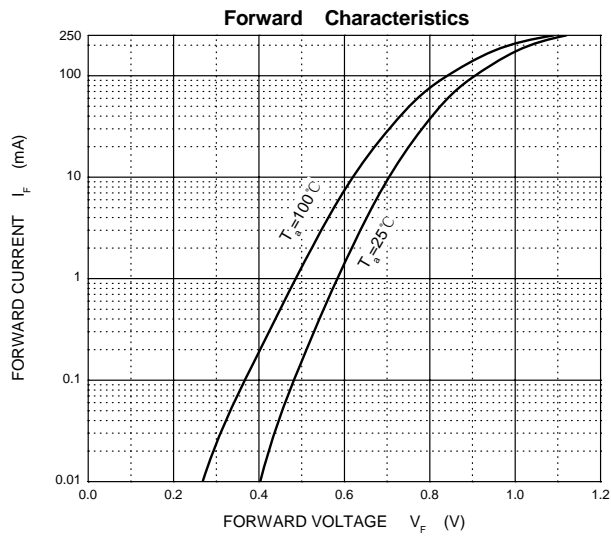
Parameter	Symbol	Limit	Unit
Non-Repetitive Peak Reverse Voltage	V_{RM}	100	V
Peak Repetitive Peak Reverse Voltage	V_{RRM}	75	V
Working Peak Reverse Voltage	V_{RWM}		
DC Blocking Voltage	V_R		
RMS Reverse Voltage	$V_{R(RMS)}$	53	V
Average Rectified Output Current	I_O	250	mA
Non-Repetitive Peak Forward Surge Current @ $t=8.3\text{ms}$	I_{FSM}	2.0	A
Power Dissipation	P_d	150	mW
Thermal Resistance Junction to Ambient	$R_{\theta JA}$	833	$^\circ\text{C/W}$
Junction Temperature	T_j	150	$^\circ\text{C}$
Storage Temperature	T_{STG}	-55~+150	$^\circ\text{C}$

ELECTRICAL CHARACTERISTICS($T_A = 25^\circ\text{C}$ unless otherwise noted)

Characteristic	Symbol	Conditions	Min	Typ	Max	Unit
Reverse voltage	$V_{(BR)}$	($I_R = 100 \mu\text{A}$)	75			V
Reverse current	I_R	($V_R = 25 \text{ V}$)			30	nA
		($V_R = 75 \text{ V}$)			1.0	μA
Forward Voltage	V_F	($I_F = 1.0 \text{ mA}$)			0.715	v
		($I_F = 10 \text{ mA}$)			0.855	
		($I_F = 50 \text{ mA}$)			1.00	
		($I_F = 150 \text{ mA}$)			1.25	
Total Capacitance	C_T	($V_R = 0 \text{ V}, f = 1.0 \text{ MHz}$)			1.0	pF
Reverse Recovery Time	t_{rr}	$I_F=10\text{mA}, I_R=10\text{mA}, I_{rr}=0.1 \times I_R, R_L=100 \Omega$			4.0	ns

BAS516

Typical Characteristics

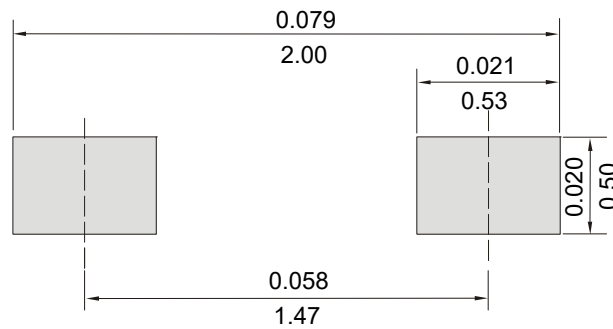


BAS516

MOUNTING PAD LAYOUT

SOD-523

Unit:Inch(mm)



ORDER INFORMATION

- Packing information

Part Number	Case	Reel Size	QUANTITY
BAS516	SOD-523	7 Inch	8000