

ER301~ER307

SUPERFAST RECOVERY RECTIFIER

VOLTAGE 50 to 600 Volt **CURRENT** 3.0 Ampere

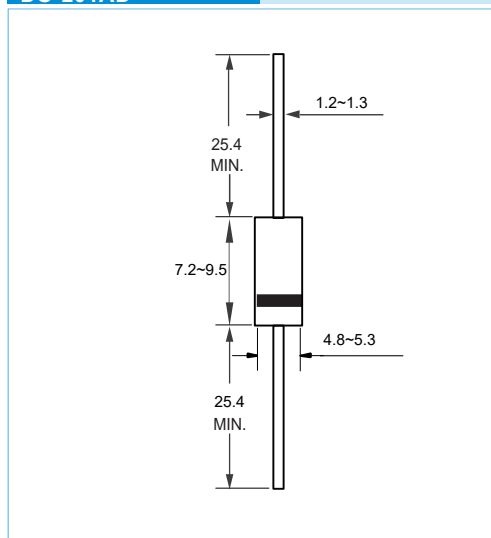
DO-201AD Unit:mm

FEATURES

- Low Forward Voltage Drop
- High Current Capability
- High reliability
- High Surge Current Capability
- Lead free in compliance with EU RoHS

MECHANICAL DATA

- Case Material: Molded Plastic.
- UL Flammability Classification Rating 94V-0



MAXIMUM RATINGS AND ELECTRICAL CHARACTERISTICS

Ratings at 25°C ambient temperature unless otherwise specified.

PARAMETER	SYMBOL	ER301	ER302	ER303	ER304	ER305	ER306	ER307	UNITS	
Maximum Recurrent Peak Reverse Voltage	V_{RRM}	50	100	150	200	300	400	600	V	
Maximum RMS Voltage	V_{RMS}	35	70	105	140	210	280	420	V	
Maximum DC Blocking Voltage	V_{DC}	50	100	150	200	300	400	600	V	
Maximum Average Forward Current (see FIG.1)	$I_{F(AV)}$	3.0							A	
Peak Forward Surge Current : 8.3ms single half sine-wave superimposed on rated load	I_{FSM}	125							A	
Maximum Forward Voltage at 3.0 A	V_F	0.95			1.30		1.70		V	
Maximum DC Reverse Current at Rated DC Blocking Voltage	I_R					5.0		100		μA
Maximum Reverse Recovery Time(Note 1)	t_{rr}					35		ns		
Thermal Resistance	$R_{\theta JA}$					35		$^{\circ}C / W$		
Typical Junction Capacitance (Note2)	C_J	100			80			pF		
Operating Junction Temperature Range	T_J	-55 to +125							$^{\circ}C$	
Storage Temperature Range	T_{STG}	-55 to +150							$^{\circ}C$	

NOTES:

1. Reverse Recovery Test Conditions: $I_F=0.5A, I_R=1.0A, I_{rr}=0.25A$
2. Measured at 1.0MHz and applied reverse voltage of 4.0 volt

ER301~ER307

RATING AND CHARACTERISTIC CURVES

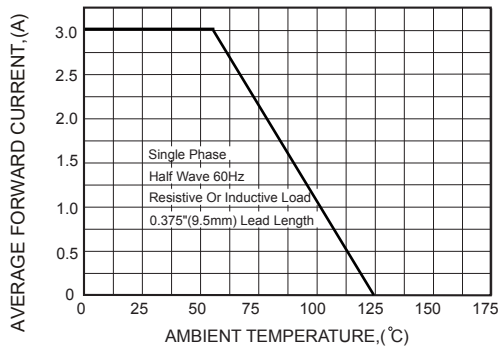


Fig. 1 Forward Current Derating Curve

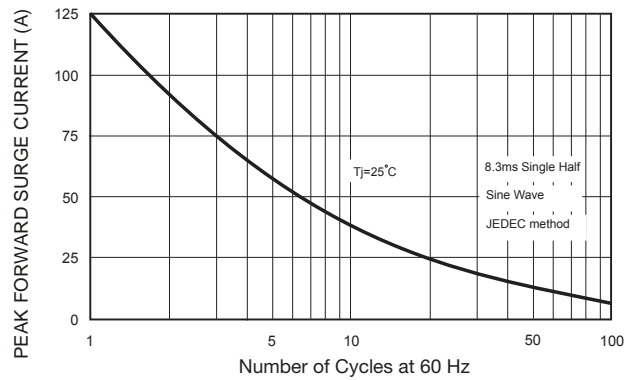


Fig. 2 Surge Current Derating Curve

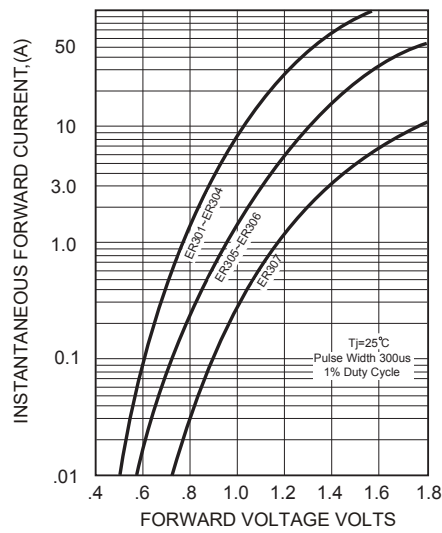


Fig. 3 Typical Forward Characteristics

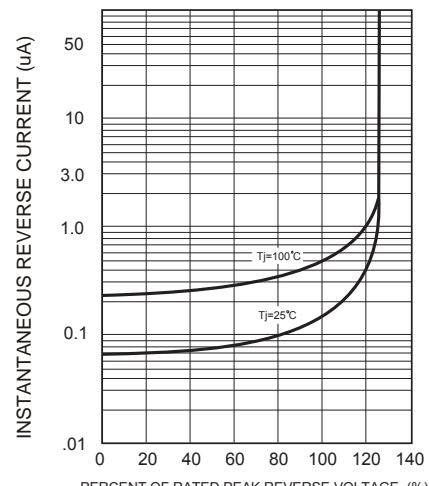


Fig. 4 Typical Reverse Characteristics

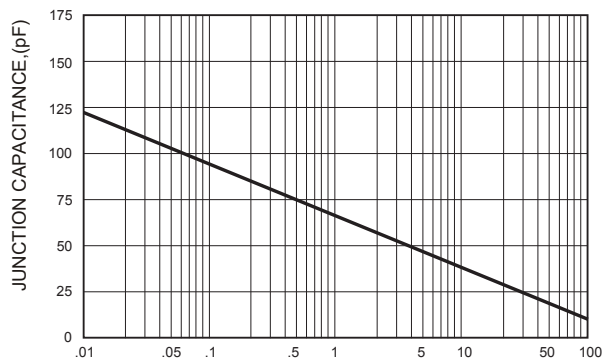
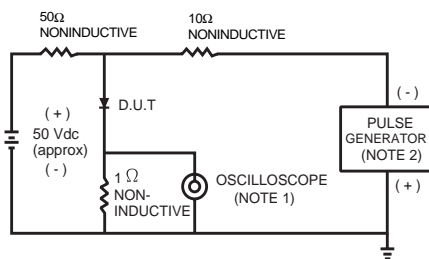


Fig. 5 Typical Junction Capacitance



NOTES:
 3. Rise time = 7.0 ns max; Input impedance = 1.0 megaohm 22 pf.
 4. Rise time = 10 ns max; Source impedance = 50 ohms.

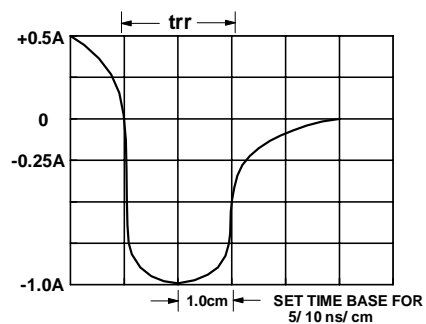


Fig. 6 Reverse Recovery Time Characteristic and Test Circuit

ER301~ER307

ORDER INFORMATION

- Packing information

Part Number	Case	Reel Size	QUANTITY
ER301~ER307	DO-201AD	13 Inch	1200