

RB520S-40

SURFACE MOUNT SCHOTTKY BARRIER

VOLTAGE 40 Volt **CURRENT** 0.2 Ampere

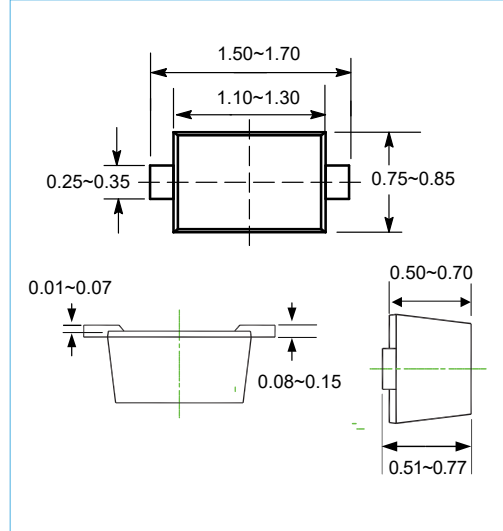
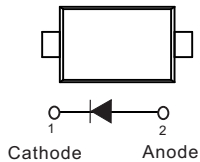
SOD-523 Unit:mm

FEATURES

- Small surface mounting type
- Low I_R
- High reliability
- Lead free in compliance with EU RoHS
- Marking code: D1

MECHANICAL DATA

- Case Material: Molded Plastic.
- UL Flammability Classification Rating 94V-0



MAXIMUM RATINGS AND ELECTRICAL CHARACTERISTICS($T_A = 25^\circ\text{C}$ unless otherwise noted)

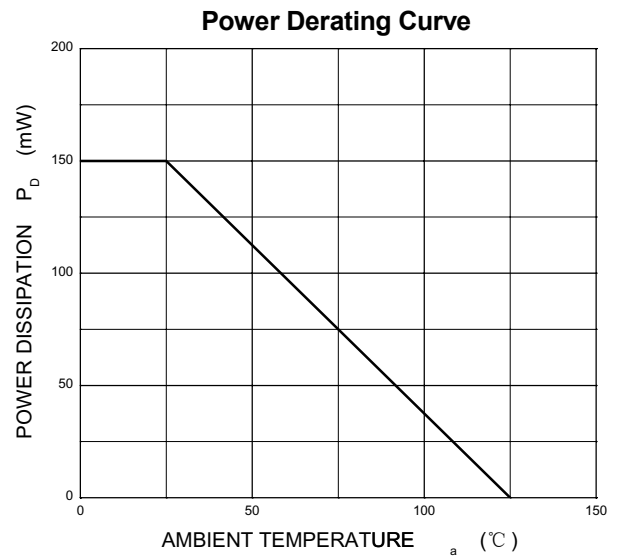
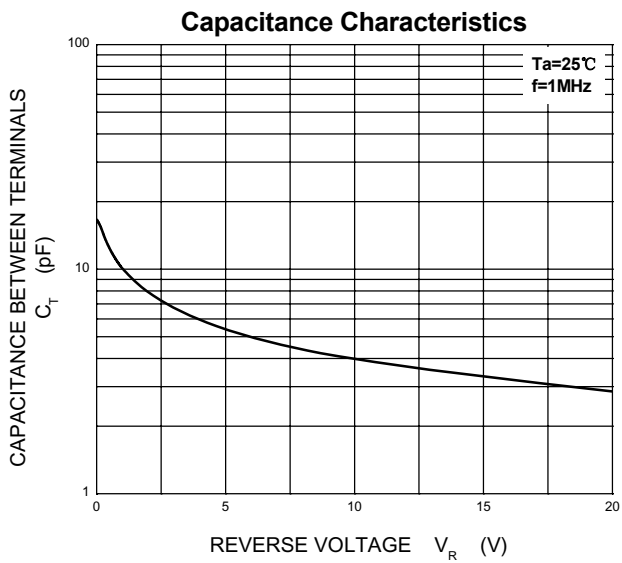
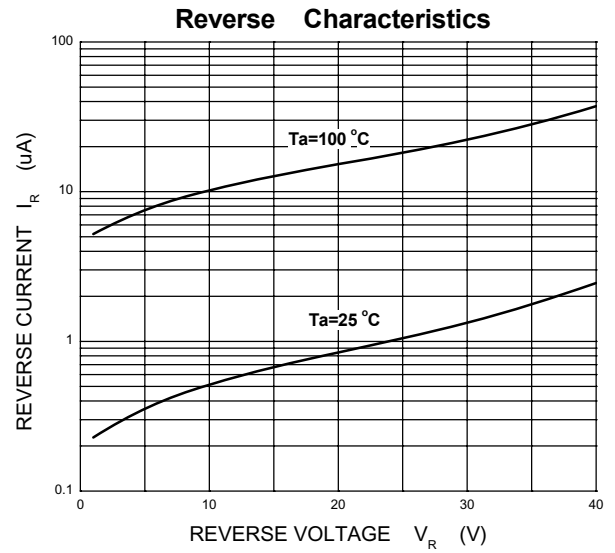
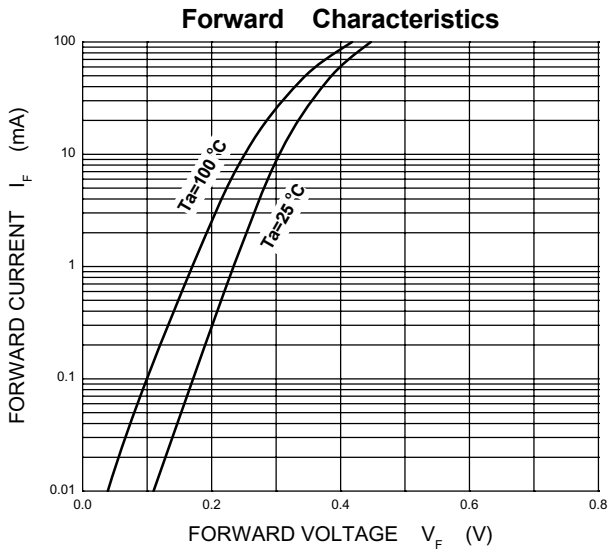
Parameter	Symbol	Value	Units
Peak reverse voltage	V_{RM}	40	V
Reverse voltage	V_R	40	V
Average Rectified Output Current	I_O	0.2	A
Non-repetitive Peak Forward surge current @ $t=8.3\text{ms}$	I_{FSM}	1.0	A
Power dissipation	P_D	150	mW
Thermal resistance junction to ambient	$R_{\theta JA}$	667	$^\circ\text{C}/\text{W}$
Junction Temperature	T_J	125	$^\circ\text{C}$
Storage Temperature	T_{STG}	-55 to +150	$^\circ\text{C}$

ELECTRICAL CHARACTERISTICS($T_A = 25^\circ\text{C}$ unless otherwise noted)

Characteristic	Symbol	Conditions	Min	Typ	Max	Unit
Forward Voltage	V_F	$(I_F = 10 \text{ mA})$		0.304	0.39	V
		$(I_F = 100 \text{ mA})$		0.446	0.55	
Reverse Leakage	I_R	$(V_R = 10 \text{ V})$		0.605	1.0	μA
		$(V_R = 40 \text{ V})$		2.837	10	

RB520S-40

Typical Characteristics

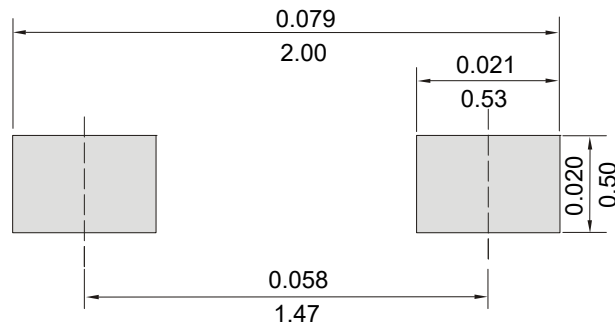


RB520S-40

MOUNTING PAD LAYOUT

SOD-523

Unit:Inch(mm)



ORDER INFORMATION

- Packing information

Part Number	Case	Reel Size	QUANTITY
RB520S-40	SOD-523	7 Inch	8000