

HER151G~HER158G

HIGH EFFICIENT RECOVERY RECTIFIER

VOLTAGE 50 to 1000 Volt **CURRENT** 1.5 Ampere

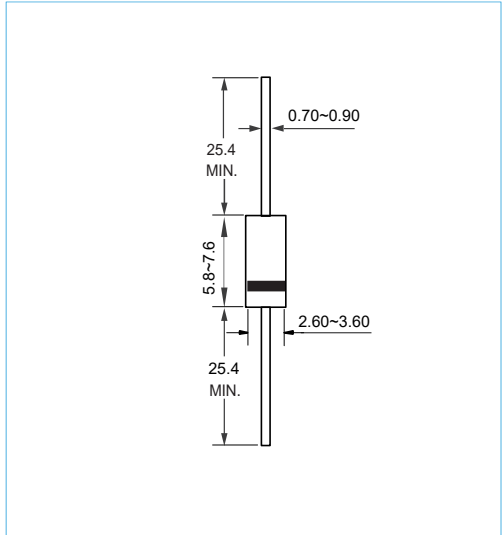
DO-15 Unit:mm

FEATURES

- Glass Passivated Junction
- Low Forward Voltage Drop
- High current capability
- High reliability
- Lead free in compliance with EU RoHS

MECHANICAL DATA

- Case Material: Molded Plastic.
- UL Flammability Classification Rating 94V-0



MAXIMUM RATINGS AND ELECTRICAL CHARACTERISTICS

Ratings at 25°C ambient temperature unless otherwise specified.

PARAMETER	SYMBOL	HER151G	HER152G	HER153G	HER154G	HER155G	HER156G	HER157G	HER158G	UNITS		
Maximum Recurrent Peak Reverse Voltage	V_{RRM}	50	100	200	300	400	600	800	1000	V		
Maximum RMS Voltage	V_{RMS}	35	70	140	210	280	420	560	700	V		
Maximum DC Blocking Voltage	V_{DC}	50	100	200	300	400	600	800	1000	V		
Maximum Average Forward Current (see FIG.1)	$I_{F(AV)}$	1.5								A		
Peak Forward Surge Current : 8.3ms single half sine-wave superimposed on rated load	I_{FSM}	50								A		
Maximum Forward Voltage at 1.5 A	V_F	1.0			1.30		1.70			V		
Maximum DC Reverse Current at Rated DC Blocking Voltage	I_R					5.0		100				μA
Maximum Reverse Recovery Time(Note 1)	t_{rr}	50				75				ns		
Typical Junction Capacitance (Note2)	C_J	35				20				pF		
Thermal Resistance	$R_{\theta JA}$	60								$^{\circ}C / W$		
Operating Junction Temperature Range	T_J	-55 to +125								$^{\circ}C$		
Storage Temperature Range	T_{STG}	-55 to +150								$^{\circ}C$		

NOTES:

1. Reverse Recovery Test Conditions: $I_F=0.5A, I_R=1.0A, I_{rr}=0.25A$
2. Measured at 1.0MHz and applied reverse voltage of 4.0 volt

HER151G~HER158G

RATING AND CHARACTERISTIC CURVES

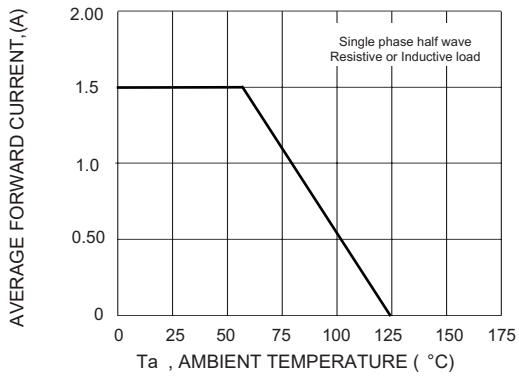


Fig. 1 Forward Current Derating Curve

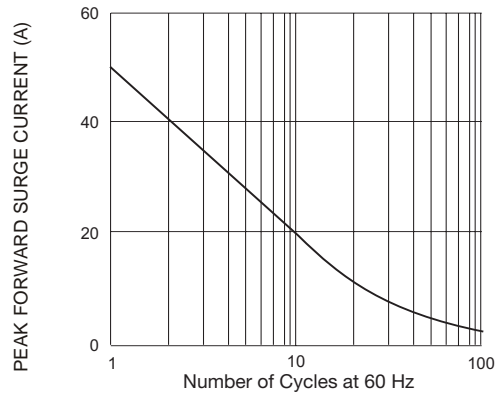


Fig. 2 Surge Current Derating Curve

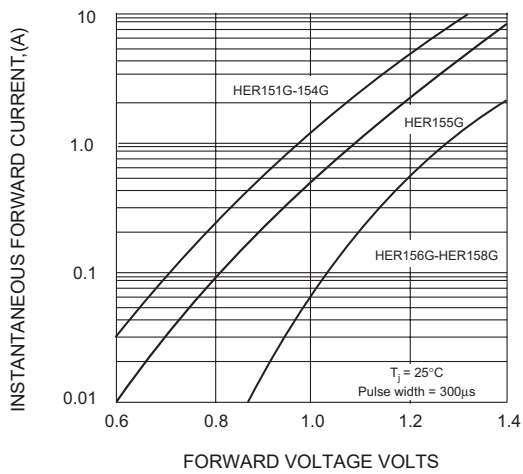


Fig. 3 Typical Forward Characteristics

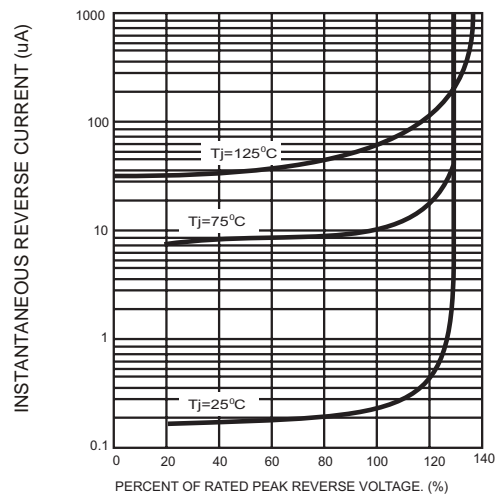


Fig. 4 Typical Reverse Characteristics

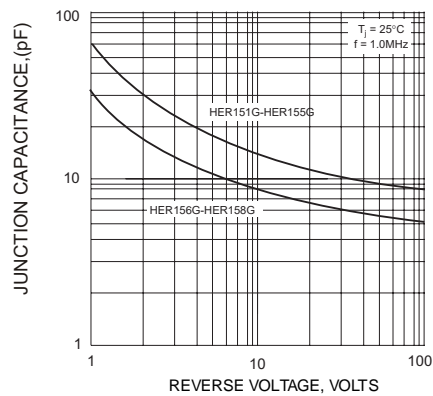
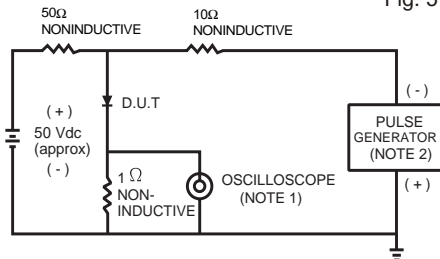


Fig. 5 Typical Junction Capacitance



- NOTES:
 3. Rise time = 7.0 ns max; Input impedance = 1.0 megaohm 22 pf.
 4. Rise time = 10 ns max; Source impedance = 50 ohms.

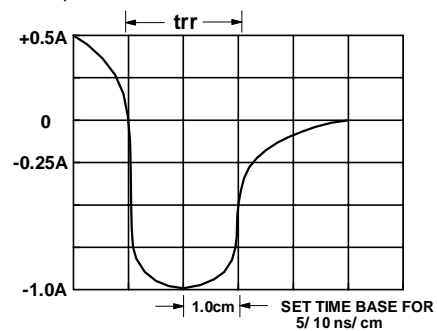


Fig. 6 Reverse Recovery Time Characteristic and Test Circuit

HER151G~HER158G

ORDER INFORMATION

- Packing information

Part Number	Case	Reel Size	QUANTITY
HER151G~HER158G	DO-15	13 Inch	4000